



The Interton portfolio



Learn more about our new Essential Hearing portfolio



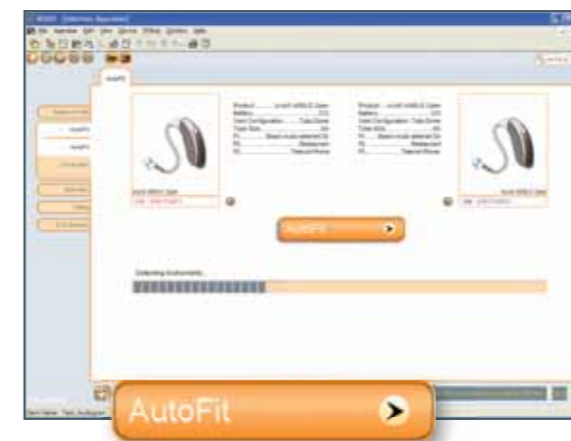
Essential hearing

Most people want a hearing aid that improves speech understanding in noisy situations and sits discreetly either in or behind the ear. They want it to be easy to use, and they want to pay a fair price. This is exactly what they get with Interton, and we call it Essential Hearing.

We have been developing and producing hearing systems for over 40 years, and our products are sold in more than 50 countries. Today, we are part of the GN Group, and we use GN's core technology to produce quality hearing aids. Our product family has been significantly updated and expanded, adding five new product families and a new easy-to-use fitting software. Each family has a different profile and price point, making it simple to find a hearing solution that suits each user's hearing needs and budget.

You can learn more about our company and our easy-to-use hearing care solutions in this brochure or at www.interton.com.

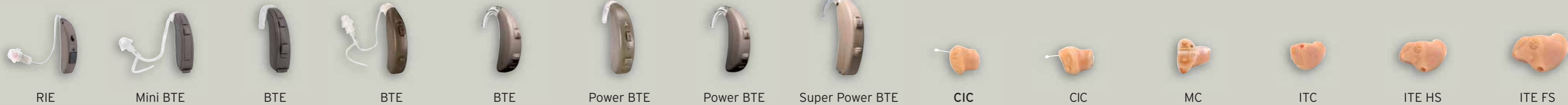
Appraise easy-to-use fitting software



The fitting process just got easier thanks to Interton's new Appraise software, built on proven technology.

The program's simple structure and user-friendly functions make it easy and fast to work with from start to finish. With Auto-Fit the first session is completed in a minute, but you can also dive into the details for the exact fit. For counseling the Interplay multimedia system provides various sound simulation options.

Form factor overview



		RIE	Mini BTE	BTE	BTE	BTE	Power BTE	Power BTE	Super Power BTE	CIC	CIC	MC	ITC	ITE HS	ITE FS
Fitting range															
Max gain (IEC 118-0)	dB	68*	62	63	71	65	72	71	86	52*	50*	52*	60*	68*	68*
Max output (IEC 118-0)	dB	130*	132	133	134	132	136	140	145	125*	124*	125*	128*	136*	136*
Battery type		10A	312	13	13	13	13	13	675	10A	10A	10A	10A / 312	312	13
Battery life (average)	hrs	111*	178	330	341	293	330	685	685	up to 108	105	100	174	293	293
Push button		●	●	●	●	●	●	●	●		●	●	optional	optional	optional
Volume control		●		●	●	●	●	●	●				optional	optional	optional
Dual microphone		●	●	●	●		●						optional	optional	optional
Telecoil		●	●	●	●	●	●	●	●				optional	optional	optional
DAI			●	●			●		●						
Open fit		●	●	●	●										
AVIO⁵		●	●	●						●	●		●	●	●
AVIO³		●	●	●						●	●		●	●	●
AVIO¹		●	●	●						●	●		●	●	●
INTERTON ELIPSE								●							
START[®]					●		●			●			●	●	●
STAGE						Trimmer L,H, P		Trimmer L,H, P	Trimmer L,H, P	Trimmer optional, up to 1		Trimmer, optional up to 1	Trimmer, optional up to 2	Trimmer, optional up to 3	Trimmer, optional up to 3

* with HPG
 L: Low frequency cut
 H: High frequency cut
 P: Maximum power output

Family introduction

	<p>Tailored for excellence avio5 is designed to deliver superior personal hearing versatility in numerous listening situations. By offering the most advanced solution and features your clients are free to enjoy any lifestyle they choose.</p>
	<p>Great sound, great deal avio3 comfort-class features and management options makes it an exceptional deal for your active clients. Features include Auto-steered Directionality, basic Data logging, and Adaptive Feedback Cancellation.</p>
	<p>All it takes to smile avio1 provides reliable hearing performance in most everyday situations with features such as Adaptive Feedback Cancellation, Fixed Directionality and Telecoil-capability.</p>
	<p>For maximum volume Interton Elipse Super Power BTE is designed for people with a profound hearing loss. With an output level of 145 dB your clients will get lots of power.</p>
	<p>Better hearing for the budget minded Interton Start marks the return of affordable hearing solutions. Interton Start consists of a complete line-up with well-proven technology and technical features such as Directionality.</p>
	<p>The first stage of digital hearing Interton Stage makes advanced digital technology available to everyone - in a trimmer-controlled product. You get digital sound processing with the ease and accessibility of a trimmer product.</p>

Feature overview

		avio ⁵	avio ³	avio ¹	INTERTON ELIPSE	START [®]	STAGE
Core feature elements	WDRC Channels	12	9	6	9	6	4
	Gain Handles	9	6	6	6	3	Trimmer
	Number of Programs	4	4 (ITE 3)	3	3	3	3
	Background Noise Reduction	•	•	•	•	•	•
	Microphone Noise Reduction	•	•	•	•	•	•
	Adaptive Feedback Cancellation	•	•	•	•	•	
Directionality	Omni	•	•	•	•	•	•
	Fixed	•	•	•		•	
	Auto-Steered (adaptive)	•	•				
	Speech-Focused (adaptive)	•	•				
Add-on features	Datalogging	•	Quick View				
	Wind Noise Reduction	•					
	Environmental Gain Tuner	•					
	Learning VC	•					
	Acclimatisation Manager	•					
Common features	Signal Tones	•	•	•	•	•	•
	Stand-by Mode	•	•	•		•	
	Power-on Delay	•	•				•

Founded in Germany in 1962, Interton today is part of one of the world's largest hearing aid organizations, the GN Group. We use their proven core technology in a way that falls in line with our own way of doing things. We believe that most people need a straightforward, functional and easy-to-use hearing solution at a fair price. So that's what we give them.

Worldwide headquarters

Interton A/S | Lautrupbjerg 7

DK-2750 Ballerup | Denmark

Tel.: +45 45 75 11 11 | Fax: +45 45 75 11 19 | www.interton.com